



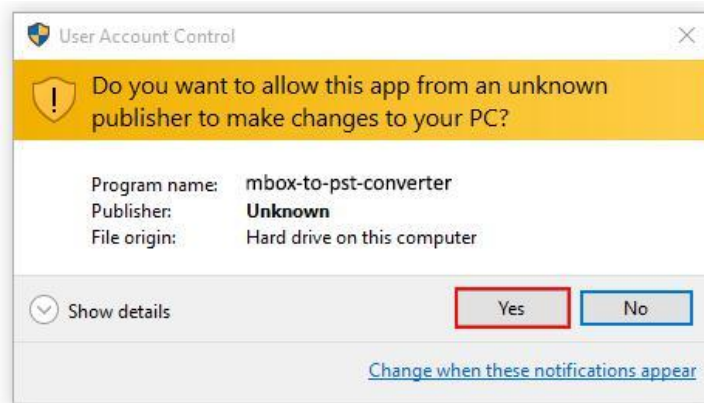
Installation Guide for Bitacube MBOX to PST Converter

How to Install the Software?

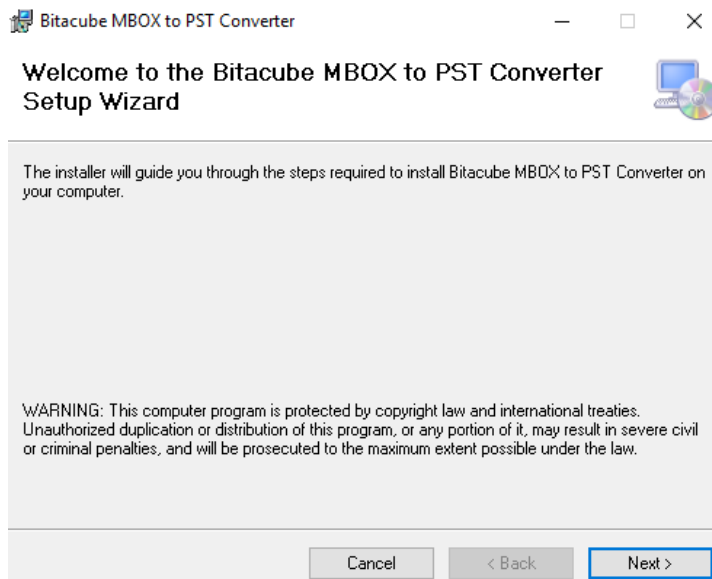
Here we will let you know how to install the Bitacube MBOX to PST Converter. However, make sure that the software installer file (.exe) is available on your computer before you install the software. If the software executable is not available on your computer, then download the file from: <https://www.bitacube.com/dl/bitacube-mbox-to-pst-converter.exe>

After you have downloaded the software installer file, perform the following steps:

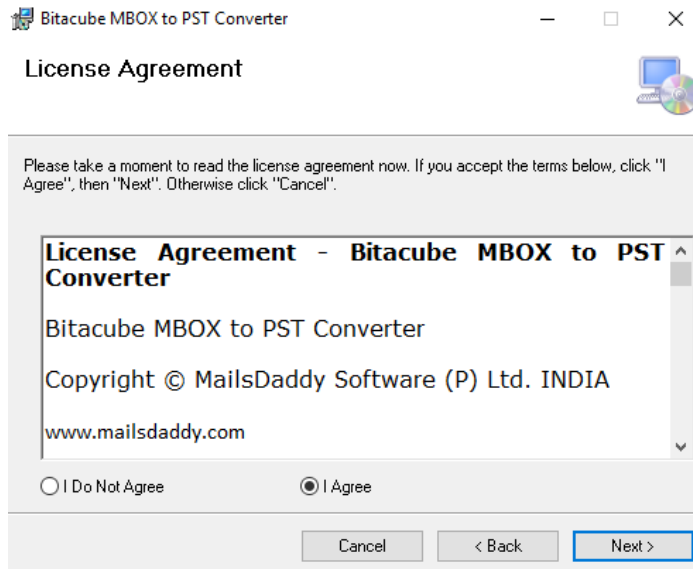
- Double-click the Bitacube MBOX to PST Converter installer file. A confirmation message will appear on the screen. Click on the **Yes** button.



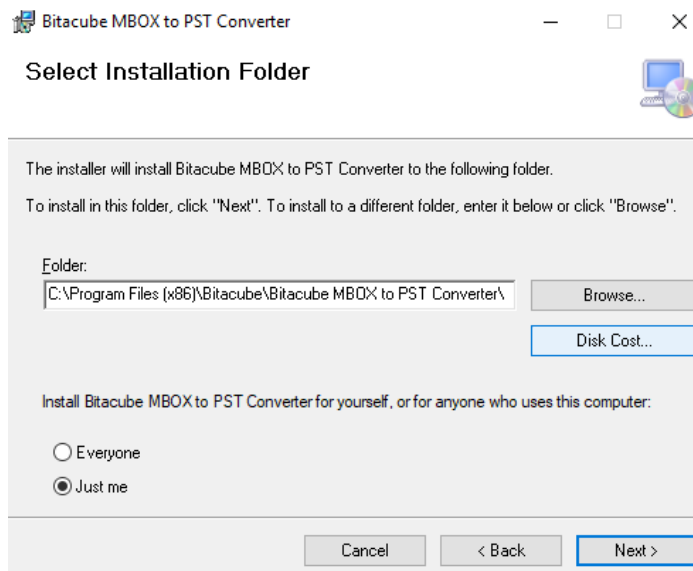
- Now a Welcome Window will appear on the screen. Click on the **Next** button.



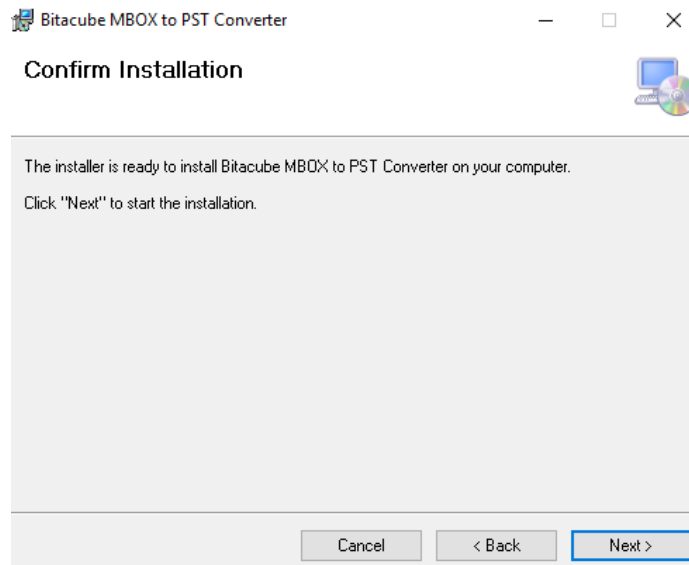
- Now you will see another window. Select **Agree** and click on the **Next** button.



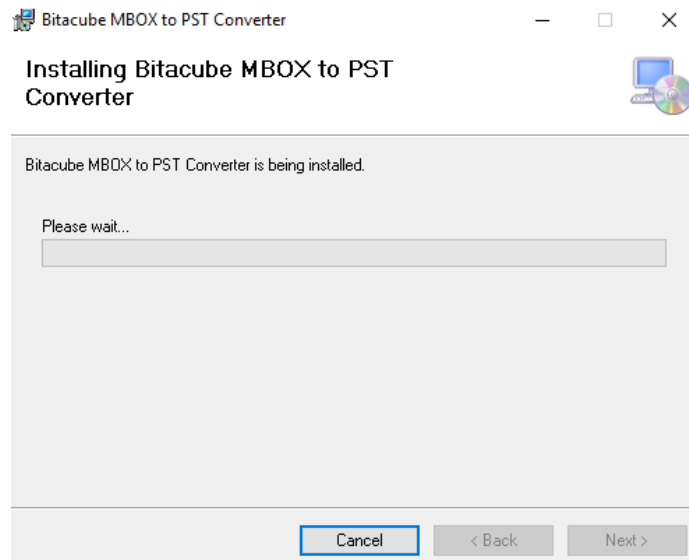
- Browse Installation folder and click on the **Next** button.



- Confirm Installation by Clicking on the **Next** button.



- Installing Bitacube MBOX to PST Converter. Please wait...



- Installation complete. Now click on the **Close** button to exit.

