



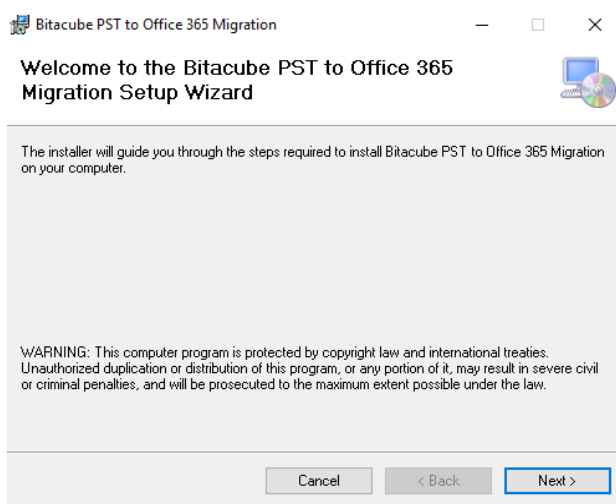
Installation Guide for BITACUBE PST to Office 365 Migration Tool

How to Install the Software?

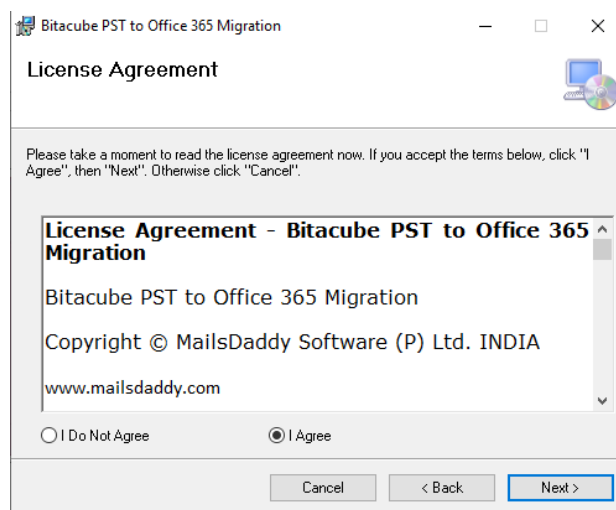
Here we will let you know how to install the Bitacube PST to Office 365 Migration Tool. However, make sure that the software installer file (.exe) is available on your computer before you install the software. If the software executable is not available on your computer, then download the file from: <https://www.bitacube.com/dl/bitacube-pst-to-office365.exe>

After you have downloaded the software installer file, perform the following steps:

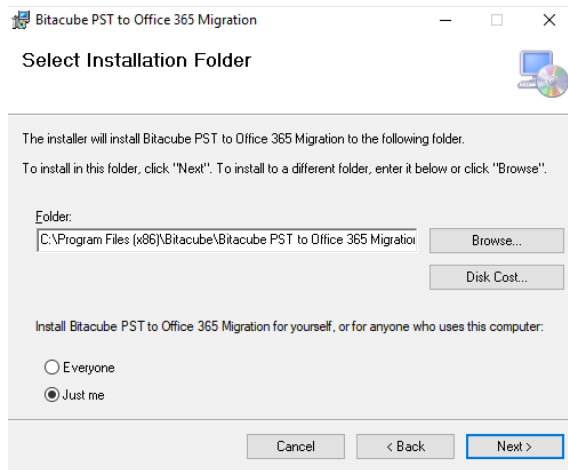
- Double-click the Bitacube PST to Office 365 Migration Tool. A Welcome Window will appear on the screen. Click on the **Next** button.



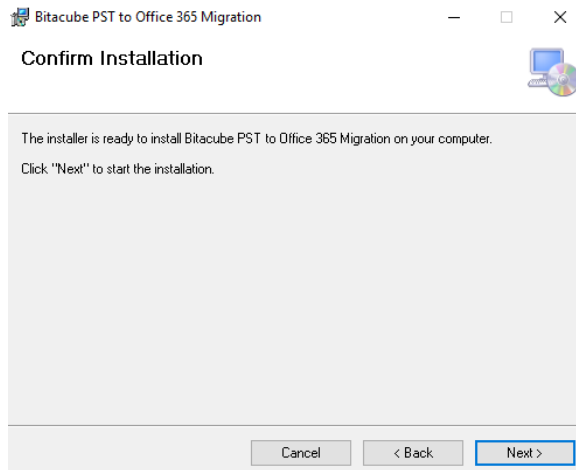
- Now you will see another window. Select **Agree** and click on the **Next** button.



- Select Installation folder and click on the **Next** button.



- Confirm Installation by Clicking on the **Next** button.



- Installation Complete. Now click on the **Close** button to exit.

